

Client Install

You should be able to carry out the client install by

1. Going to <http://support.pertexa.com>
2. Register as a new client (just needs your basic information)

You will then be sent a password and you will have access to our site support web pages

1. You will need a minimum of Windows XP and .Net framework installed.
2. You will see **Download Client**
3. Just follow the install process which should only take a few minutes.

Once done you should see a PPM icon on your desk top – just click and you should connect to our 'Production Server' The first time it takes a few moments as it initializes some settings. This is all clients normally need to do.

If the Pertexa Practice Management Software is installed on Your Server, you will need to do the following manually.

- a) On the C: drive you should see a Directory 'Program Files'
- b) Within that 'Pertexa Practice Management Software' and a config file which is about 1 KB.
- c) Open with a Notepad and replace the IP address with one that points to Your Server.
- d) Save the file and restart PPM, it should now go to Your Server and you should be able to log in with the ppm credentials.

See the next pages for further instructions.



Pertexa System Configuration Requirements

Operating System Requirements:

- PC Computer installed with Windows XP
- Internet Connection (Broadband via Cable or DSL Connection)
- Installation of Microsoft .NET Framework, Version 2.0 PLUS related updates

IMPORTANT: Requires installation of Microsoft “critical” Windows XP updates **EXCEPT** Internet Explorer (IE) Version 7.0; **AND**, all current Microsoft “critical” updates to .NET Framework, Version 2.0

Regarding Internet Explorer, Version 7.0

There are no known incompatibilities with the newest version of Microsoft Internet Explorer (7.0), however, this new version incorporates some significant changes to your browser that you may or may not want to adjust to at this point in time. According to PC Magazine, the 7.0 Version is still under evaluation as it relates to readiness for the mass market.

See Notes to Network Administrator on Following Page.

Proceed with the update of your system with the latest Microsoft updates and .NET2.0 framework. These updates are down loadable **FREE** from the Microsoft website.

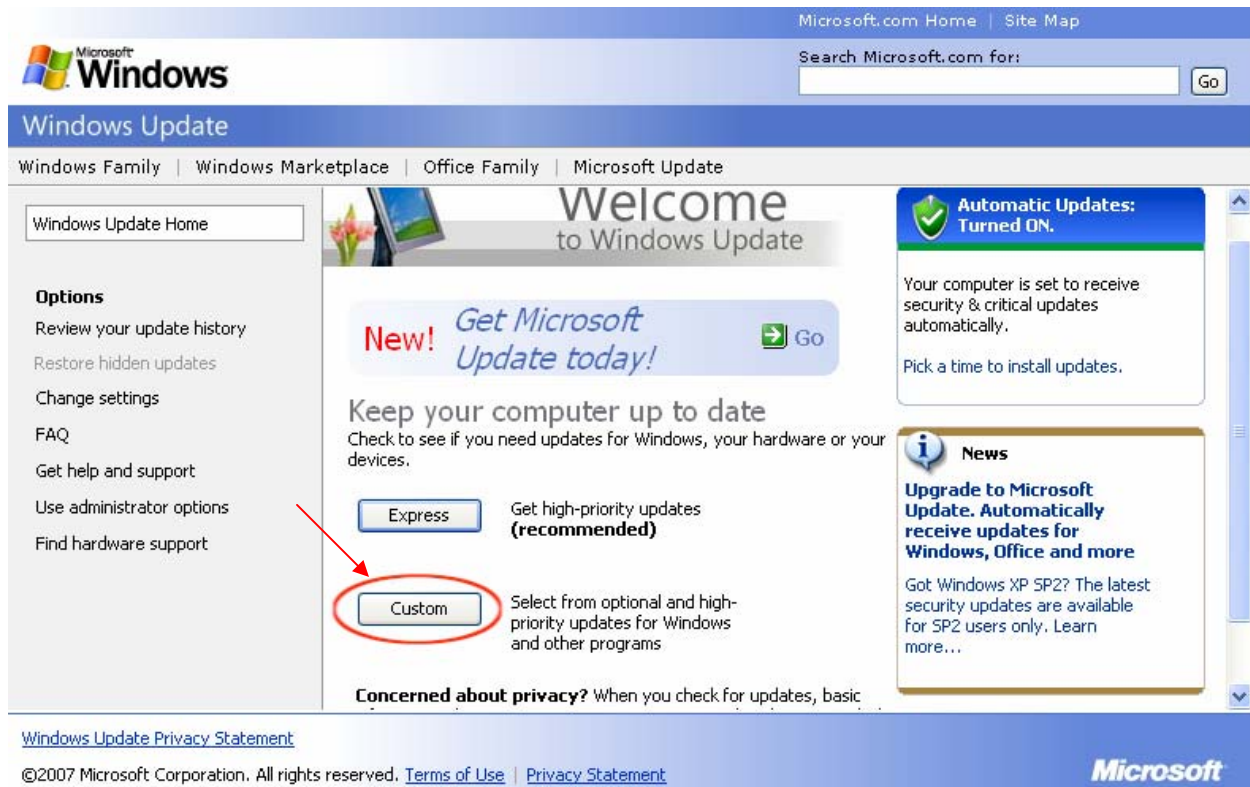
Notes to Client Network Administrator

The following checklist provides **general** step-by-step instructions for updating Windows XP and confirming successful installation of required Microsoft .NET Framework, Version 2.0.

Step 1: Confirm that all Windows XP computer is updated with all outstanding Microsoft “critical” updates

Instructions:

- 1) Open Internet Explorer
- 2) In the browser's top menu bar, click TOOLS, then WINDOWS UPDATE
(You will be transported to Microsoft's update site illustrated below.)
- 3) Click “Custom” selection



- 4) Microsoft will automatically check for the latest updates for your computer, and return a list of outstanding critical updates. **Checkmark ALL “critical” Windows XP updates EXCEPT (Uncheck) “Internet Explorer” update for IE Version 7.0** (not required and see above notes).

- 5) Next, click “**Review and Install**” link located at top of the listed updates.

 [Review and install updates](#)

- 6) Upon successful installation of critical updates your XP system should now be up-to-date with all “general” XP updates.

WHEN COMPLETE, CLOSE YOUR BROWSER WINDOW

Step 2: Install Microsoft .NET Framework

Instructions:

- 1) Open Internet Explorer
- 2) In the browser's top menu bar, click TOOLS, then WINDOWS UPDATE
- 3) Click "Custom" selection
- 4) From the LEFT SIDE Page menu, click "Software"
(Microsoft will check for the available software and return a list of options.)
- 5) Checkmark next to **".NET Framework, Version 2.0"**
- 6) Next, click **"Review and Install"** link located at top of the listed updates.
- 7) Microsoft MAY display the Internet Explorer 7.0 critical update again, if so UNCHECK it again, and then proceed to download/install the .NET software.
- 8) When .NET installation is completed, Microsoft will list recent critical .NET updates as illustrated below. Uncheck again, Internet Explorer 7.0, and click "Review and Install" to proceed.

WHEN MICROSOFT CONFIRMS SUCCESSFUL INSTALLATION OF .NET UPDATES, SETUP IS COMPLETE!

The screenshot displays the Microsoft Windows Update interface. The main content area is titled "Customize your results" and "Select High-Priority Updates". A red circle highlights the checkbox for "Windows Internet Explorer 7.0 for Windows XP" under the "Microsoft Windows XP" section. Below it, two security updates for Microsoft .NET Framework, Version 2.0 are listed with checked checkboxes. The left sidebar shows "Software, Optional (9)" selected under "Select by Type".

Step 3: Follow the simple instructions to connect to PPM using the powerful Microsoft .NET framework.